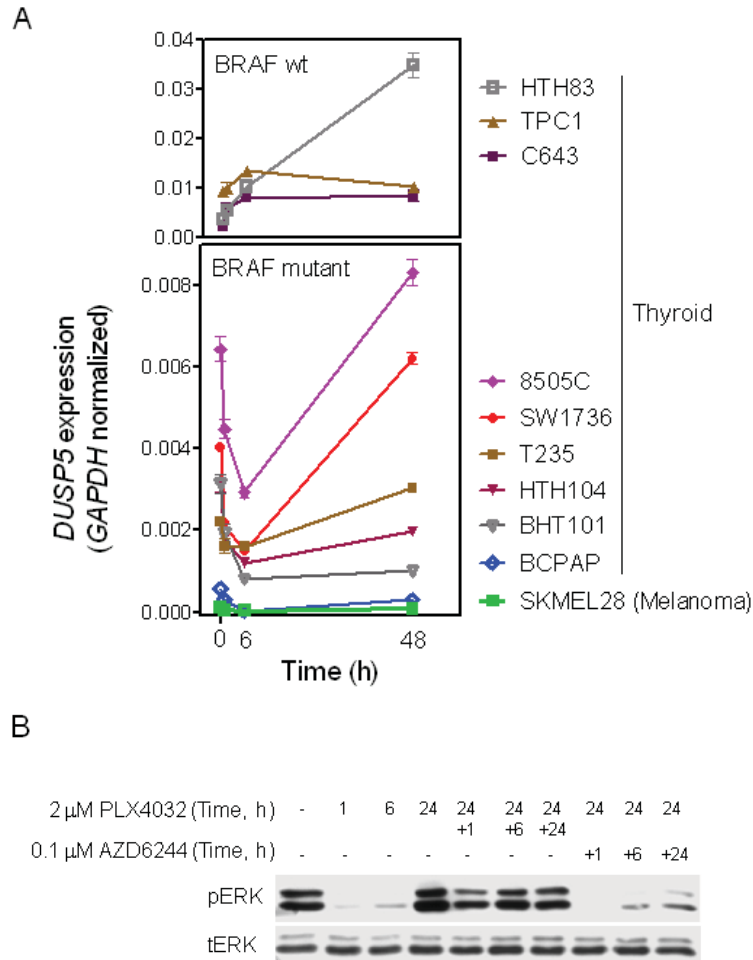


SUPPLEMENTARY INFORMATION

Supplemental figures and figure legends



**Figure S1. A**, Lineage-specific differences in effects of PLX4032 on RAS/RAF/MAPK signaling. DUSP5 expression kinetics in a panel of *BRAF* wild type (*Top*) and *BRAF* mutant (*Bottom*) cell lines treated with 2  $\mu$ M PLX4032 for 1, 6 or 48 h. Points represent DUSP5/GAPDH Q-RT-PCR values of triplicate assays (mean +/- SD). **B**, Re-addition of AZD6244 blocks PLX4032 induction of ERK1/2 phosphorylation. 8505C cells were treated with PLX4032 for the indicated times and then re-treated with either fresh PLX4032 or MEK inhibitor AZD6244 for an additional 1, 6 or 24 h. Proteins were extracted and immunoblotted for pERK and tERK.