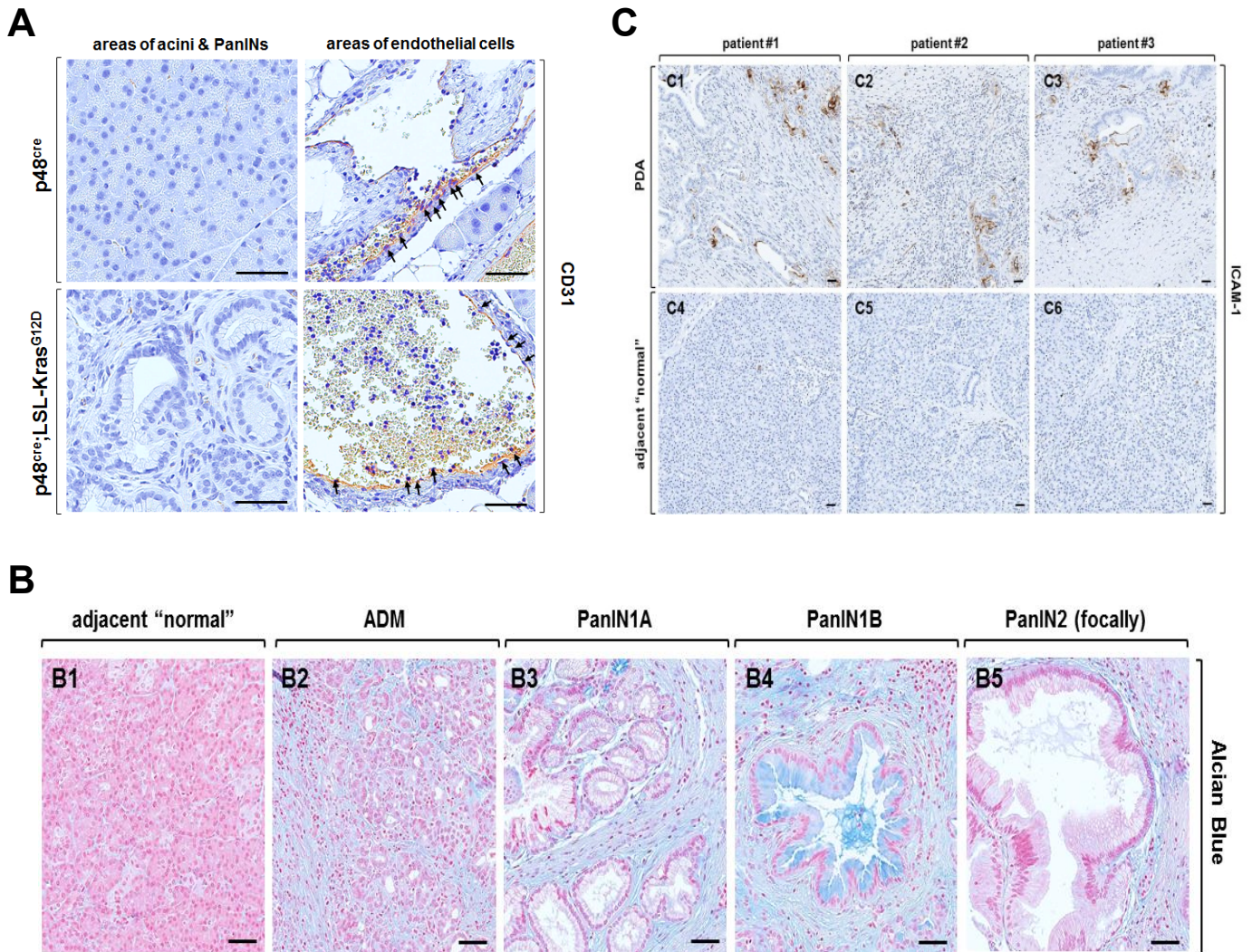


**Supplementary Figure S3 shows analysis for microvascularization (A), alcian blue staining of tissue sections (B), and ICAM-1 expression in human samples (C).**



**Supplementary Figure S3. (A)** Areas of endothelial cells and normal acini in p48<sup>cre</sup> control mice or ADM/PanIN lesions in p48<sup>cre</sup>;LSL-Kras<sup>G12D</sup> mice at week 14. Shown is an immunohistochemistry analysis for expression of CD31 (endothelial cell marker). Arrows indicate CD31 positive, endothelial cells. The bar indicates 50  $\mu$ m. **(B)** Human tissue samples with regions of ADM or PanIN1A, PanIN1B, or PanIN2 (focally) lesions were stained with alcian blue. The bar indicates 50  $\mu$ m. **(C)** Human tissue samples of PDA and patient-matched adjacent uninvolved normal pancreas were stained for expression of ICAM-1. The bar indicates 40  $\mu$ m.