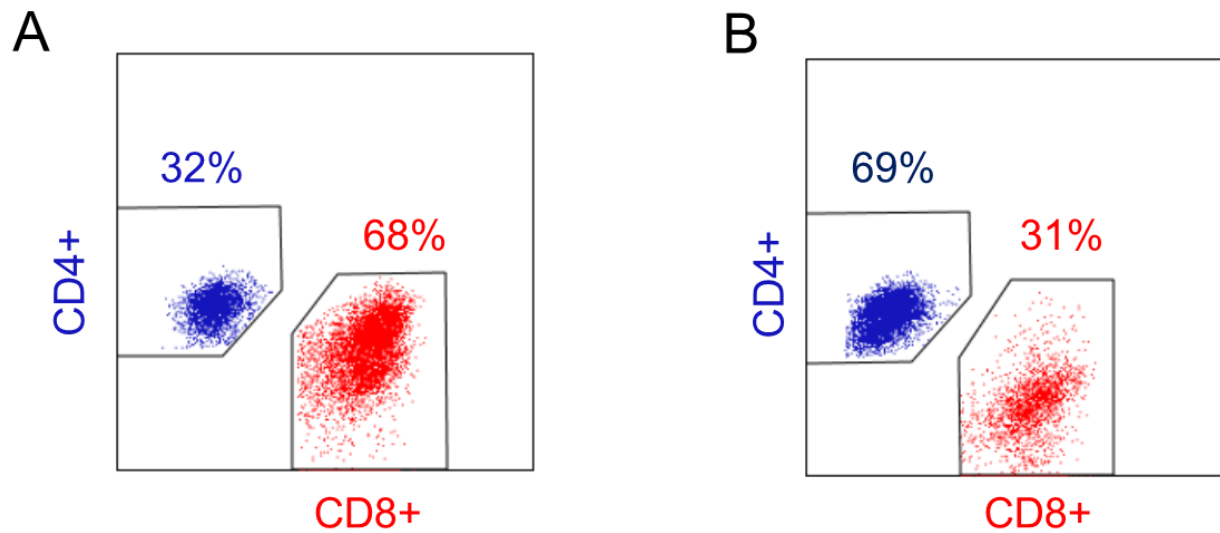


Supplementary Figure 5



**Supplementary Figure 5. SmarT-cells isolated from CAPAN-1 PSCA/TGFβ/IL4 expressing tumors in mice contain both CD4+ and CD8+ T cell fractions**

**(a-b)** Presence of polyclonal SmarT-cells (CD4+ and CD8+ subsets) harvested from CAPAN-1 PSCA/TGFβ/IL4 expressing tumors from two mice on day 18.