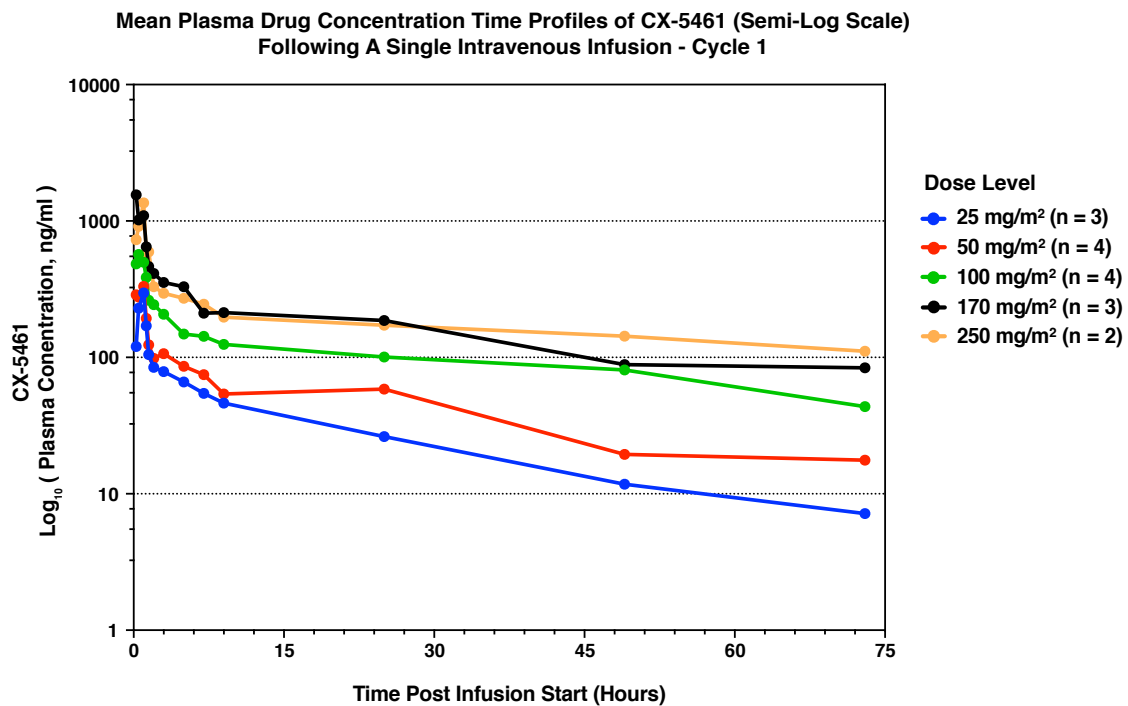
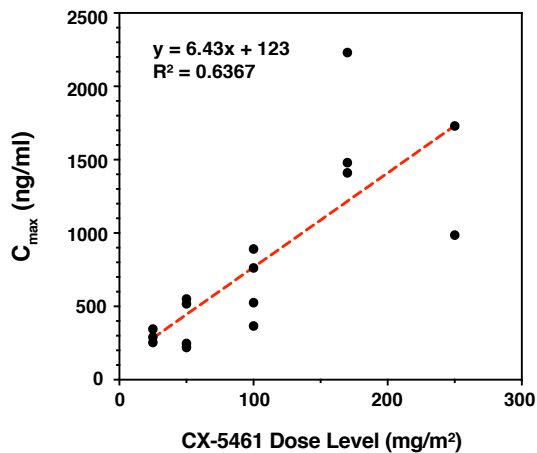


Supplementary Figure S2

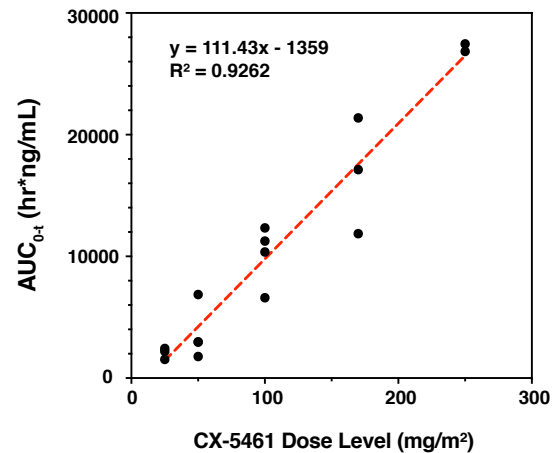
A.



B.



C.



Supplementary Figure S2. Pharmacokinetics analysis of CX-5461 in patients with advanced hematological disease.

Plasma was prepared from patient blood samples prior to dosing and at 15 min, 30 min, 1 hr, 2 hr, 4 hr, 6 hr, 8 hr, 24 hr, 48 hr and 72 hr following CX-5461 administration in cycle 1. (A) Mean plasma concentrations of CX-5461, plotted as a function of time following a single intravenous infusion. Data is presented on a semi logarithmic scale over the complete sampling period (72 hr). Legend describes the colors denoting each dose level and the number of patients enrolled in each cohort. (B) Plasma C_{max} (ng/mL) and (C) AUC_{0-t} (hr*ng/mL) are plotted as a function of CX-5461 dose level over the range of 25 to 250 mg/m²; a statistical analysis of dose proportionality was performed using the power model (red dotted line). AUC_{0-t} : area under the curve (AUC) from time 0 to last quantifiable concentration.