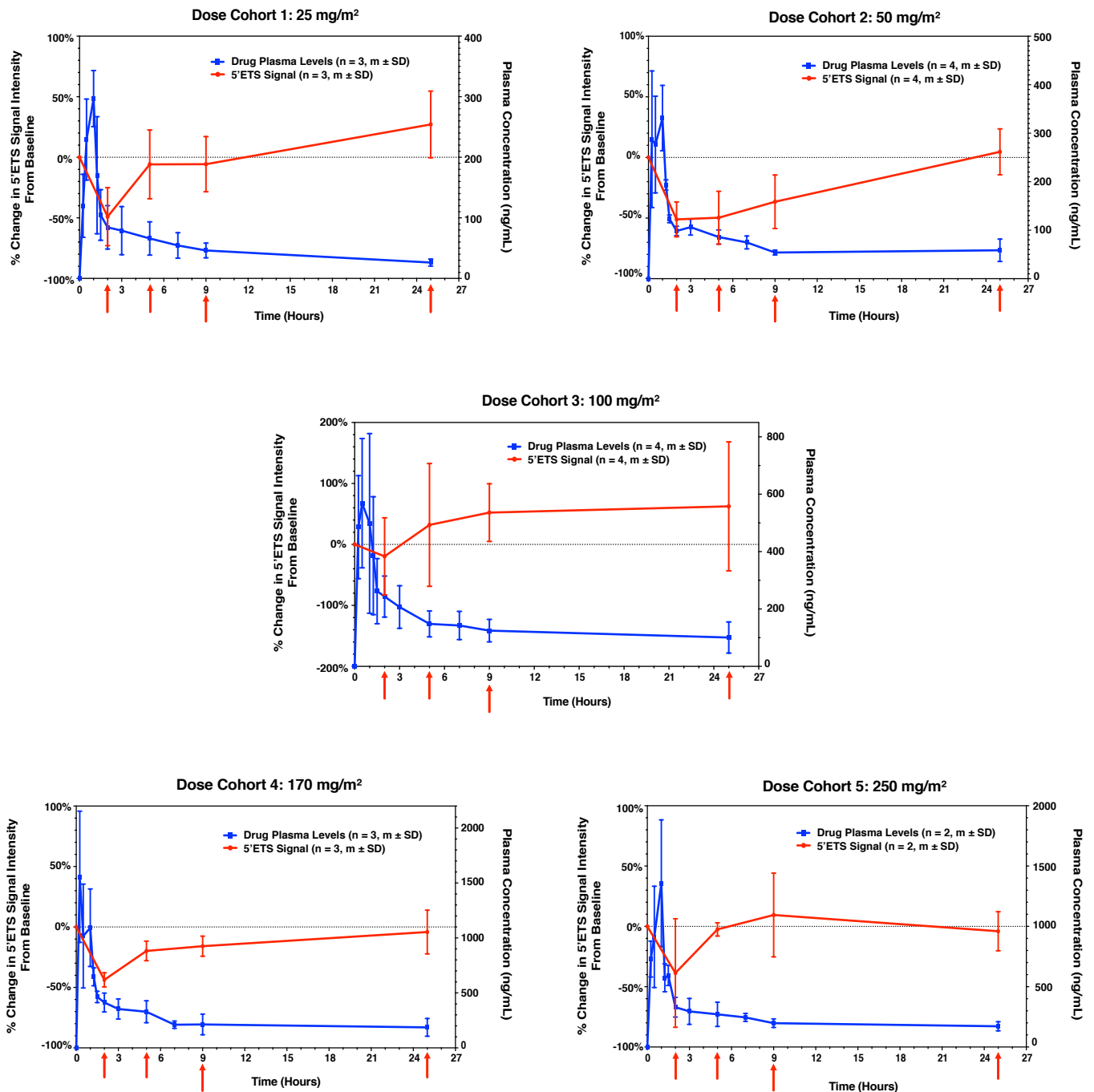


# Supplementary Figure S3

A.



## Supplementary Figure S3. Exposure–response relationship between CX-5461 levels and rDNA transcription rate in normal PBMCs.

Pol I-mediated rDNA transcription rates were defined as the intensity of RNA-FISH signal (*in situ* detection of 5'ETS 47S pre-rRNA transcript) expressed as a median percent change from baseline (red line). Arrows indicate the time of PBMC sample collection following a 1 hr intravenous infusion (1 hr, 4 hr, 8 hr and 24 hr post-infusion). CX-5461 plasma concentration profiles (ng/mL, blue line) were plotted as a function of time over the initial 25 hr following infusion ( $n = \text{patient number}$ ; all error bars represent mean  $\pm$  SD).